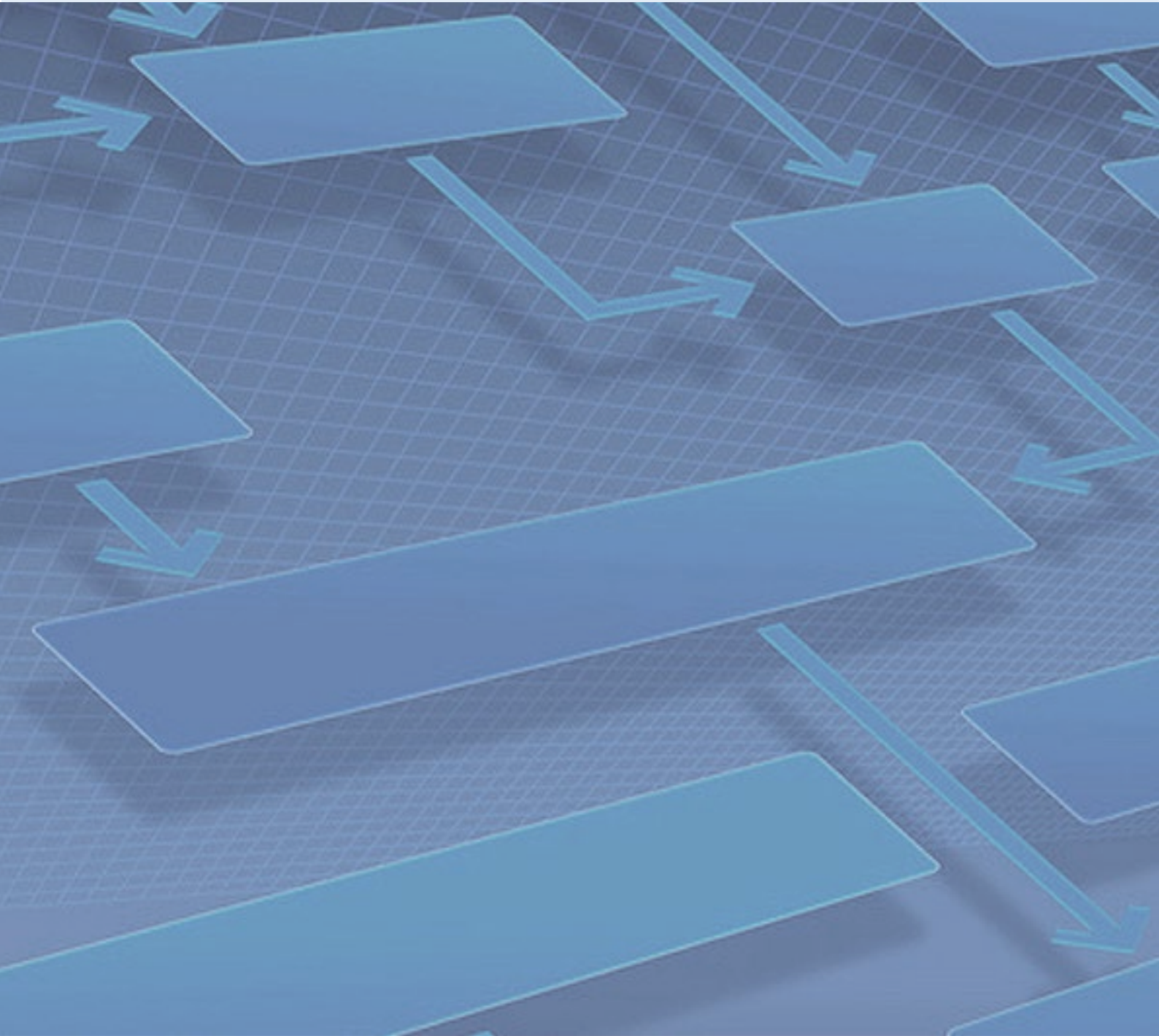
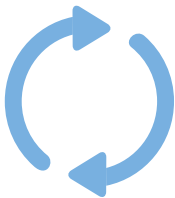
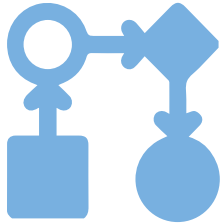


inducta++



iWORKFLOW

What is iWorkflow?



iWorkflow is a **software for automating, managing and monitoring business processes**. Everything you need to **organize, automate, execute, and analyze business processes** in order to connect people, data, and daily activities.

Typically it uses a database server. It helps you track your process performance by triggering business rules based on data and facilitates the flow of information, tasks and events. **iWorkflow can help you automate rules, notifications, reminders, escalations, and service level agreement.**

Application manages and monitors state of activities in a workflow, such as processing and approval of a certain activity and it determines to which new activity it has to transit according to defined processes.

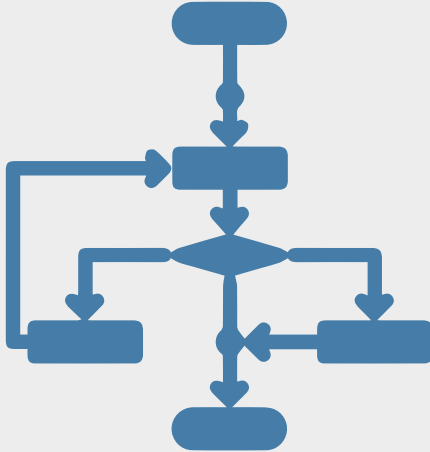
The actions can be anything from starting a trigger based campaign to sending an e-mail reminder to users or escalating overdue items to management.

Use iWorkflow to take the complexity out of incoming information automate business process for better insight into your tasks and their effect on the overall system.

iWorkflow framework is providing common functionalities such as **monitoring, alarming, configuration management, logging, tracing**, workflow design and execution.



iWorkflow platform



On top of this framework there is a set of specific **pluggable components** (such as component for data correlation collection or component for binary data decoding, ...) each providing additional functionality to the whole system.

The idea behind the iWorkflow platform is to provide possibility to implement and test those constantly repeated patterns. Such design enables the whole system to be easily extended by adding new components without any impact to the existing ones.

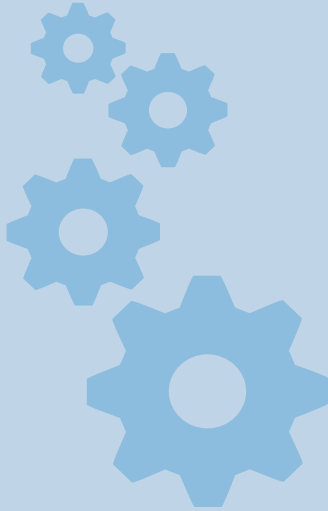
Components are used as building blocks for creating processing workflows. **You can use them in a form of plugin modules and then reuse them in a number of different solutions** throughout graphical workflow design while preserving the clarity of overall solution design and transparency of implemented logic.

The iWorkflow is here also to implicitly ensure that non-functional requirements of the target solution are up to required standards.

By using the **data designer** users can define their own data structures and then use them in workflow designs for storing messages and all the other data instances that workflow works with.



Functionalities of iWorkflow



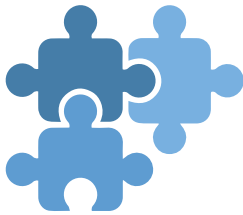
- Configuration of workflows is intuitive and flexible
- You can create a flexible workflow process which can be modified at any time. Steps can be complex or simple, you can set multiple or single branching...
- Copying of a previously built process is possible, as well as using workflow as a part of another workflow
- Run sequential or parallel activities, enabling simultaneous tasks to be completed in parallel
- Set status indicators to flag processes that have various levels of urgency and enable subsequent checklist of activity within each workflow step
- Configure e-mail notification and reminder capability
- Application can meet any integration requirements and organization's unique needs



Functionalities of iWorkflow

Components and connections

Workflow is made up of tasks carried out by the plugin components.

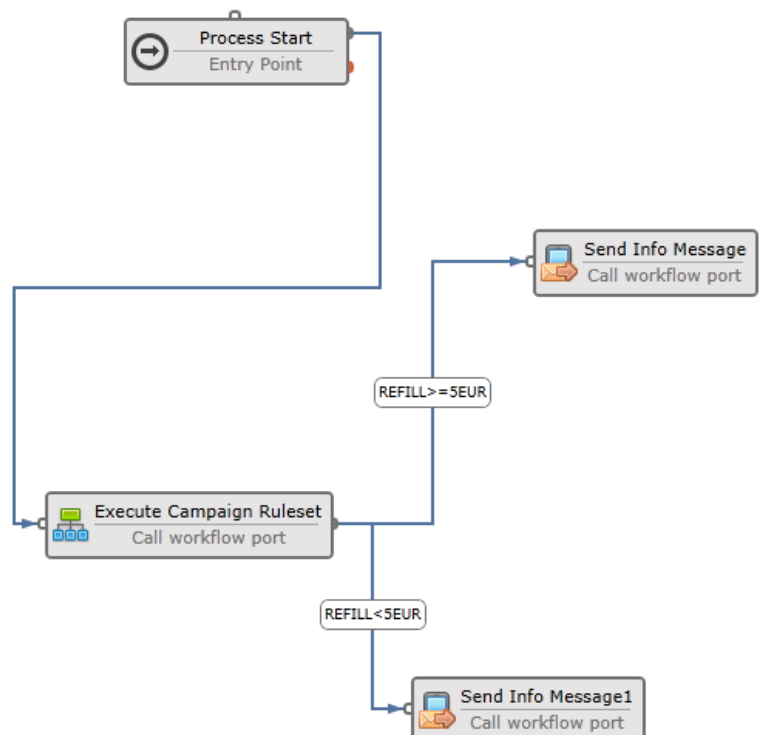


A component

- can have any number of input or output ports
- can provide some fixed data types (schemas) to the workflow
- can inject the meta data variables into the workflow definitions
- has its own configuration schema presentation related configuration (image, relative position of ports, etc)
- provides specific functional implementation to the workflow.

Connections are used to propagate data between components and also to control the program flow and order of execution.

Component ports are visually connected together on the designer by using the connection lines.



Functionalities of iWorkflow

Rules component

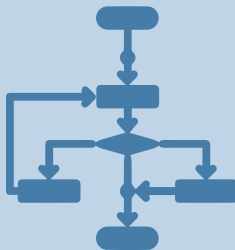


iWorkflow comes with integrated rules component.

Rules component provides a possibility to define a set of rules, hierarchically organized, that can be used to either influence the message flow or message content or both.

Rules are defined by using a graphical user interface without any coding.

Composition of workflows



Different workflows can be connected together to create more complex definitions.

In other words one workflow can be used as a component in other workflows.

In this way some common functionality can be designed once and reused in many different scenarios.



Full flexibility through scripting

In case when some complex handling is required that cannot be managed by using other components alone, the workflow platform is equipped with rich set of features that enable convenient use of CSharp as a scripting language in the workflow definition.

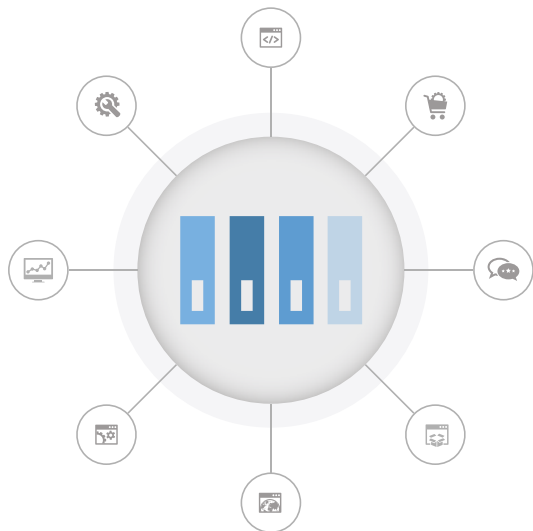


Benefits



- Easy-to-use drag-and-drop designer GUI
- Accelerate business processes
- Automate processes in your organization
- Improved interaction between people and data
- Simplify communications and maintenance
- Apply changes faster
- Easy implementation of business processes across applications
- Insight into business process performance
- Lower redundancy
- Reduced administration costs
- Records of taken actions
- Easily create targeted, integrated multichannel campaigns and track their progress
- Automate any business process in your organization
- Automate assignment with business rules





Petrovaradinska 7
10000 Zagreb
Croatia
www.inducta.hr
info_contact@inducta.hr

Inducta is a company specialized in ICT solutions adapted to needs of our Customers from various industries.

Our portfolio consists of the following services:

ICT Consulting

Based on our experience and knowledge of the ICT (Information and Communication Technology) trends and developments, together with our understanding of Customer's business, we recommend appropriate ICT solutions to our Customers. Optionally, we select the best solution together with the Customer, depending on the current situation and business plan.

Development of ICT solutions

We design, develop and test solutions according to Customer-specific requirements. In the process we take advantage of our knowledge and experience in the field of ICT solutions architecture, which come from our work on numerous projects in various industries around the world.

Delivery of ICT solutions

Being fully Customer-oriented, we integrate solutions into Customer's technical and business environment, while at the same time providing various forms of education related to the usage of our products.

Products and platforms

Based on our experience in developing solutions, we develop products for a wider market and adjust them according to Customer requirements. In addition, we offer our platforms and modules to other companies engaged in developing software.